

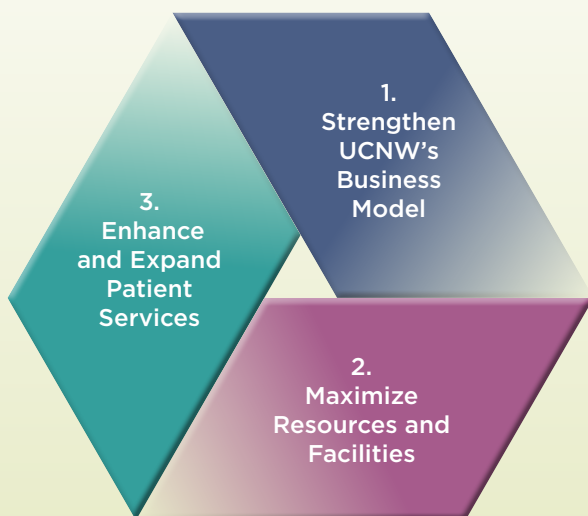
OUR VISION

Everyone has the opportunity to live their healthiest life.

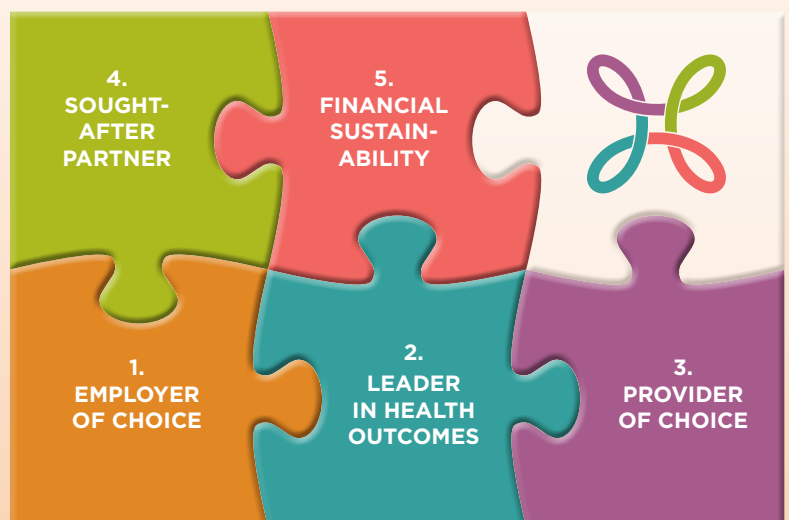
OUR MISSION

To increase the years of healthy life in the people and communities we serve.

OUR STRATEGIC PRIORITIES



OUR GOALS



OUR VALUES

Respect • Accountability • Integrity
Collaboration • Innovation



UNITY CARE NW BOARD MEMBER OPPORTUNITY

Join us in providing health care for all.

Become a member of Unity Care NW's Board of Directors!

Our Mission

To increase the years of healthy life in the people and communities we serve.

What Unity Care NW Does

- We build a community in which everyone has the opportunity to live their healthiest life.
- We address the health needs of the whole person through primary medical, dental, behavioral health, and pharmacy services.
- We change lives both inside and outside the exam room by prioritizing partnerships with those in our community who share our commitment to building a healthier community.
- We uphold the values of respect, accountability, integrity, collaboration, and innovation in all we do.

Why it is an honor to serve on the Unity Care NW Board of Directors

Board members work to direct and support this essential community health organization. It is crucial that we have a board that truly reflects the community and region in which we live and those whom we serve.

This is the right opportunity for you if:

- You are passionate about making a special contribution to our community and want to be a part of advancing Unity Care NW's mission.
- You are excited about rolling up your sleeves and being a part of a hard-working and respectful team.
- You are able to spend 6-10 hours a month doing board work: attending meetings, participating in committee work (currently via Zoom), and being an ambassador in our community.

Interested? Here's how to apply:

Unity Care NW Board of Directors is currently seeking new board members to serve 3-year terms. Please email BoardMember@ucnw.org to receive more information and an application. You may also request an application packet from reception at any Unity Care NW health center.

If you would like to learn more, request an application packet, and/or need assistance to complete the application, please contact us at BoardMember@ucnw.org or call **(360) 788-2621**.

UNITY CARE NW BOARD MEMBER DUTIES

Responsibilities

The Unity Care NW Board of Directors is a group of volunteers that is legally responsible for governing Unity Care NW in accordance with its mission: To increase the years of healthy life in the people and communities we serve. Guided by the Unity Care NW values of Accountability, Integrity, Respect, Collaboration, and Innovation, the Board does the following:

- Stewards the mission and helps shape the organization's future
- Ensures effective organizational strategic planning, budgeting, and monitoring of performance results
- Establishes policies to ensure legal and fiscal integrity and accountability, in accordance with bylaws
- Ensures strong Board performance, continuity, and leadership development
- Works as a collaborative team with the Unity Care NW Chief Executive Officer, while maintaining clear delegation of roles and responsibilities
- Selects, supports, and evaluates the Unity Care NW Chief Executive Officer
- Upholds the organization's mission and builds a positive image of Unity Care NW in the community

Expectations and Time Commitment

Board members work respectfully and collaboratively with each other and as a whole Board. Board members are asked to bring their individual perspectives, skills, and abilities to help us become better and stronger in service to the Unity Care NW mission. To this end, Board members are expected to:

- Contribute 6-10 hours per month on Board work, including time outside of scheduled meetings
- Attend all full Board meetings (held the fourth Monday of each month from 5:30 p.m. to 7:30 p.m.)
- Thoroughly review meeting materials in advance of meetings in order to be prepared to participate and make decisions
- Participate in at least one of the Board committees: Finance, Development, Executive, Governance, Human Resources, and Quality Improvement.
- Participate in Board development activities, including orientation, annual retreat, and year-end evaluation
- Maintain confidentiality of Board or staff where a need for confidentiality is indicated
- Complete a background check and sign a conflict of interest form (*only if selected.*)

UNITY CARE NW BOARD MEMBER APPLICATION

Please complete and submit it to BoardMember@ucnw.org. You may submit hard copies of your application by postal mail, drop off at Unity Care NW clinics, or scan and email to BoardMember@ucnw.org. Please email BoardMember@ucnw.org or call **(360) 788-2621** if you need assistance applying for this board service opportunity. Please add additional pages if you need more room.

Name: _____ **Phone:** _____

Email: _____

Occupation: _____

1. Please tell us a little about yourself and why you are interested in serving on the Board of Directors for Unity Care NW?

2. What does the statement “Healthcare for all” mean to you?

3. Have you ever experienced difficulties accessing healthcare? To the extent you feel comfortable doing so, can you tell us more about your experience?



UNITY CARE NW BOARD MEMBER APPLICATION

4. What special qualifications, experiences or passions do you think you could bring to your service on the Unity Care NW Board?

5. Tell us about your experience working with individuals from diverse backgrounds, political views, or different ideals and values from your own.

6. What do you think Unity Care NW's most important priority is right now in our community?

7. Tell us about a time you had a difficult conversation with someone?

8. What do you think is your biggest asset that you could offer the Board of Directors? What do you anticipate being the most challenging aspect about joining the board?

UNITY CARE NW BOARD MEMBER APPLICATION

9. Nuts and bolts

A. If you were to serve on the board, what committees would you want to serve on and why?

☐

Finance

☐

Executive

☐

Human Resources

☐

Development

☐

Governance

☐

Quality Improvement

Why:

B. Could you commit to four to six hours per month of board service?

☐

Yes, every month

☐

Yes, most months

☐

No, my schedule will not allow this

C. Are you available to meet on the fourth Monday evening each month for regular board meetings?

☐

Yes, every month

☐

Yes, most months

☐

No, my schedule will not allow this

10. Are you a patient of Unity Care NW?

☐

Yes

☐

No

A. Do you have any dependents who are patients of Unity Care NW?

☐

Yes

☐

No

11. Do you have experience living with homelessness?

☐

Yes

☐

No

12. Please provide the **names** and **contact information** of two people who would be willing and able to share with us their opinions about your character and their impression of what you would bring to the Unity Care Board of Directors.

Reference #1:

Reference #2:

Thank you so much for your interest! We will be in touch.